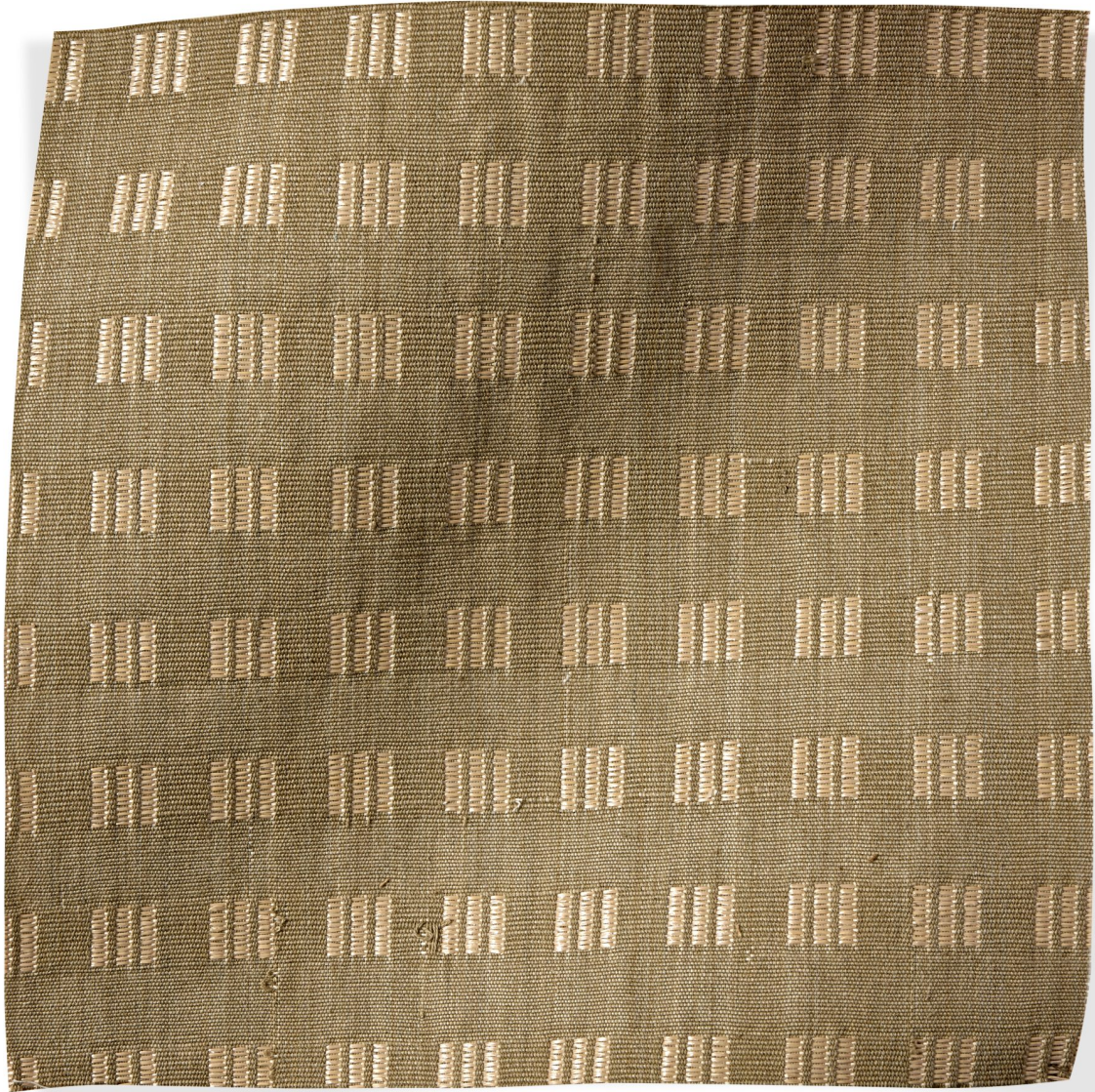




ROSE TARLOW

MELROSE HOUSE

Kolda Marsh



425 N Robertson Blvd
Los Angeles, California 90048

Kolda Marsh

2363/02

- 65% Cotton 35% Raffia
- 54" Wide
- Repeat V 1 3/16" H 1 3/16"
- Martindale 25,000 cycles
- Hand spun, hand-dyed, hand woven. Dye lots may vary, please request a cutting for approval order.